



Message from VPRA, Dr. Robert Nobles



Holiday Greetings from the Office of
Research Administration

Dear Colleagues,

As the holiday season approaches, I want to take a moment to extend my heartfelt gratitude for your dedication and partnership in advancing research excellence at Emory University. Your tireless efforts and unwavering commitment to our mission continue to inspire and drive impacts in our communities; while also enhancing research administrative processes across our campuses.

I'm pleased to share some of the progress we've made together this year in research administration... [Read More](#)

Featured Highlights

[December 2024 Insight Project Updates](#)



Authors: Cindy Cha, Sr. Project Support Specialist (RBO) & Kim Maune, Emory Chief Implementation Officer, (Insight GMS)

Phase 1: New Expertise, Enhanced Environment, Validation Efforts

- We're excited to welcome Amy Andrade, Director of Research Informatics, to lead integration and migration efforts. Amy will oversee integration & migration efforts, supervise our Global Innovation data engineers and coordinate Prerana Gupta, our Business Analyst.
- Opportunities to sign up to participate in future testing and validation will be provided in various forums. Please also reach out to Darryl Grant (darryl.grant@emory.edu) if you are interested.
- The ORA Dragon Team has joined the implementation team and will lead the change management efforts. To learn more, see the Change Management section below.
- A training plan is being developed for this first phase by Courtney Miller, Corporate Director, Emory Digital Training Academy, and her team. The project team will work closely with the Insight team and Emory Digital Training Academy to develop training materials and a deployment plan.

[Read Full Article](#)

[New eNOA Distribution Process](#)



EMORY
UNIVERSITY

Research Grants and Contracts

Authors: Edwin Bommel, AVP, (RGC) & Jumionne Tiako, Director, Post-Award Setup/Close, (RGC)

We are thrilled to announce improvements to the distribution of our electronic Notice of Award (eNOA) designed to enhance transparency, streamline processes, and provide faster, greater efficiency for our faculty.

What's New

As of August 15, 2024, eNOAs are now sent directly to faculty via email, with award documents attached. Unit research administrators continue to receive these as usual to ensure seamless support. This improvement eliminates the need to log into OnBase to retrieve the eNOAs, streamlining access to eNOAs and award documentation.

Previously, research administrators manually forwarded eNOAs to all PIs listed on an award. With this new process, all PIs and their administrators automatically receive eNOAs at the same time, ensuring timely and accurate notifications.

[Read Full Article](#)

[Research Administration FY23-FY24 Mission Metrics](#) [Now Available](#)



Author: Alex Wagner, Director, Research Data Analytics, (RBO)

[View the FY23-FY24 Mission Metrics Report](#)

What are Mission Metrics?: This dashboard was developed as a reporting process for faculty facing metrics. The goal is to supply meaningful metrics to faculty to measure performance of ORA's departments and units. This data-informed dashboard will seek to improve ORA's transparency and identify areas for improvement. The metrics are produced in several phases to incorporate feedback and develop additional metrics.

The FY23-FY24 and Past Mission Metrics are available on the [RBO website](#).

Federal Agency Updates

NIA Clinical Research Enrollment Policy



NIA Clinical Research Enrollment Policy (NOT-AG-24-081)

This Notice informs the research community of the National Institute on Aging's policy and procedures for supporting NIA-funded clinical research and details the requirements and expectations of NIA-funded investigators.

[Read Announcement](#)

NIAMS Implementation of LOR Due Dates for Applications Requesting \$500,000 or More in Direct Costs in Any Year (excluding consortium F&A)



NIAMS Implementation of LOR Due Dates for Applications Requesting \$500,000 or More in Direct Costs in Any Year (excluding consortium F&A) (NOT-AR-24-022)

The purpose of this Notice is to inform applicants of a change in the due dates of Letters of Intent (LORs) for all grant applications requesting \$500,000 or more in direct costs in any year (excluding consortium F&A).

Effective immediately, applicants requesting \$500,000 or more in direct costs in any year (excluding consortium F&A) will need to abide by the new LOR due dates.

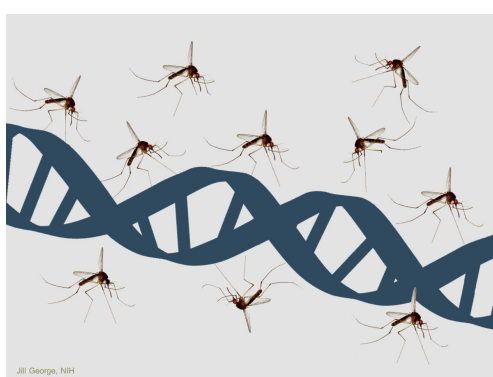
[Read Announcement](#)

Department Updates

Environmental Health and Safety Office

[Gene Drive: Risks and Benefits](#)

Gene drives refer to genetic elements that skew the pattern of inheritance of a given characteristic in sexually reproducing organisms. The evaluation, distribution of risks and benefits and the fact that gene drives may be viewed as a particularly profound interference with nature raises further novel ethical considerations.



[Read Full Article](#)

[Image Credit: National Institutes of Health](#)

Institutional Review Board

Watch our latest [Webinar](#) if you missed it, covering all things Recruitment! You can also access our other past webinars there, like October's on "OIT Security Review."

- Note- There will *not* be a webinar in December. We will resume in January.

With Winter Break coming up, leave even more time than usual for IRB review:

- If your study expires before February 14, 2025: Submit a Continuing Review at least 45 days in advance to ensure your submission has enough time for review.
- For new studies and study modifications: Submit as early as possible and alert your assigned IRB analyst of any external deadlines.

Our IRB staff all now have "**Book with me**" links. Have things to discuss with your analyst that are too complex for email? See their email signatures, or their Bios on the relevant "Meet our Teams" page: <https://irb.emory.edu/about/contact/index.html>

- If you're *not* already working with an analyst on a study, but have a complex question: ask to speak with someone by emailing our listserv (irb@emory.edu).

The IRB will transition to a new system, "[Insight](#)," in the Spring.

- If you have studies ready to **close out** by then, please go ahead and do so before then (even Exempt studies).

Streamlining [Sponsor-Investigatory Study Start-Up](#)

- As part of its continuous effort to streamline research at Emory, IRB and RCRA are updating training requirements for new Sponsor-Investigators.
- First time Sponsor-Investigators will now be able to take an online training course in Brainier at their convenience, instead of scheduling a one-on-one meeting. More information can be found on [the IRB's training page](#).
- The IRB and RCRA teams will still provide support, consultations and guidance as needed for IND/IDE related questions.

As always, remember to reach out to the IRB's Reliance Team [in advance](#) if you're submitting a multisite, federally-funded grant application. You may need to budget for IRB fees.

Office of Research Development

NIH Simplified Review Framework

NIH is working to reduce reviewer burden and create a less biased review process by refocusing review on scientific merit. Research project applications (including R01, R03, and R21) submitted on or after January 25, 2025 will be reviewed using the new criteria.

Key changes include:

- Significance and Innovation will be scored together as review factor 1 (scored)
- Approach, including rigor and feasibility, will be scored as review factor 2 (scored)
- Investigator and Environment will no longer be scored and instead be appropriate or not

This review framework reduces the importance of Investigator and Environment and emphasizes Approach. Applicants are encouraged to spend extra time developing and revising the approach section of their proposals.

Faculty serving on review panels in Spring 2025 using the new review framework are invited to share their experience as a reviewer with keck@emory.edu so that insights can be collected and shared.

Office of Technology Transfer



Please Use:
**Outgoing Low-Risk
DUA Process**

 EMORY UNIVERSITY | Office of Technology Transfer

[Enjoy faster processing times with
OTT's Outgoing Low-Risk DUAs
process](#)

This is an updated announcement about OTT's low-risk, outgoing DUA process that we sent earlier this year. No one has used it yet, so the purpose of the article is to define the process and encourage people to use it.

[Read Full Article](#)

Research Compliance & Regulatory Affairs (RCRA)

[Emory IACUC December Newsletter](#)

Check out the IACUC December 2024 newsletter for updates on the following topics:

- IACUC Policies
- Post Approval Attestation of Responsibilities
- Letter from the Institutional Official to users of controlled substances and dangerous drugs

- From the Office of Occupational Health and Safety
- Alerts to Researchers-FCR meeting cancelled for 1/1/2024
- Alternative Searches in Protocol
- Have you read the most recent version of your approved IACUC protocol?
- Resources for researchers- Training Verification Update and FAQ: What is continuing education?
- IACUC Site Inspections – New schedule for the second period of 12/1/2024 - 5/30/2025
- IACUC Office Contacts – end of the year closing and Committee meetings

Read the December 2024 Issue

"Ask RCRA" Community Forum - Returning January 2025



"Ask RCRA will be on a holiday break in December 2024 to allow for you all and our teams time to wrap up the calendar year. We will be back on **Tuesday, January 14th at noon** to bring you more important research compliance information, including regulatory updates and institutional changes in policies and procedures.

Take the survey and let us know about research compliance topics you'd like to see when we return! - [Ask RCRA Feedback Survey](#)"

The annual certification period is December 1st, 2024 through February 28th, 2025

What to expect:

For investigators planning to submit grant proposals between **December 1st, 2024 through February 28th, 2025**, please ensure you complete your initial annual disclosure in eDisclose as far in advance of the proposal deadline as possible.

If you have questions, you can email edisclose@emory.edu for help or for more information.

If you have previously disclosed in eDisclose, you can find a guide [here](#).

If this is your first time disclosing in eDisclose, you can find the guide [here](#).

You must complete the Annual Certification if you are an Emory faculty member or staff member involved in research.

*****A current annual disclosure must be on file prior to submission of any proposal to a federal agency, any investigator who will be participating on a federal proposal submitted during this period must complete their annual disclosure prior to the proposal deadline. *****

For additional information, please visit: [Conflict of Interest and Commitment Office | Emory University | Atlanta GA](#)

ANNUAL CERTIFICATION

Time to [submit your Annual Certification](#) information!

The annual certification cycle is December 1st 2024 - February 28th 2025

*Please note, that the submission platform eDisclose will be available after 12pm on December 1, 2024.

VISIT OUR ANNUAL CERTIFICATION SHAREPOINT PAGE FOR MORE INFORMATION >>

Coming in May 2025 investigators must use [SciENCv](#) to format NIH and NSF key personnel documents

SciENCv (Science Experts Network Curriculum Vitae) is an application in My NCBI that helps you create and manage documents in support of grant applications with participating agencies. In SciENCv you can document your education, employment, research activities, publications, honors, research grants, and other professional contributions. The adoption of this common researcher profile system for Federal grants is intended to reduce administrative burden for researchers. Allow yourself ample time to transition to SciENCv, as the process will require manual data entry and review of data that is imported (e.g. publications). [Read More](#)

Science Experts Network Curriculum Vitae (SciENCv)

Science Experts Network Curriculum Vitae (SciENCv) is a new electronic system that helps researchers assemble the professional information needed for participation in federally funded research in one universal platform.

How Does it Work?	Who is Working on it?	When is it in Effect?
<p>SciENCv gathers and compiles information on expertise, employment, education and professional accomplishments from existing systems. Researchers can use SciENCv to create and maintain biosketches that are submitted with grant applications and annual reports.</p> <p>Principles:</p> <ul style="list-style-type: none"> Any researcher may register Leverages data from existing systems Data are owned by the researcher Researcher controls what data are public Researcher edits and maintains information Researcher provides own data to describe research outcomes Researcher has ultimate control over data in biosketch 	<p>In collaboration with the FDP, SciENCv is being built by the National Center for Biotechnology Information (NCBI) at the National Institutes of Health under the aegis of an interagency workgroup composed of members from the Department of Defense, the Department of Energy, the Environmental Protection Agency, the National Institutes of Health, the National Science Foundation (NSF), The Smithsonian and the United States Department of Agriculture.</p> <p>The interagency workgroup operates under the National Science and Technology Council's (NSTC) Research, Biomedical, Biobehavioral and Science of Science Policy Committees.</p>	<p>By May 2025 investigators must use SciENCv to format NIH and NSF key personnel documents.</p> <ul style="list-style-type: none"> For NIH Biosketches and Current and Pending Support for proposals and RPPRs submitted on or after May 23, 2025 investigators must use the new Common Forms using SciENCv. NSF has already implemented the use of SciENCv. Please see NOT-OD-24-163 for details.

[Research Compliance: Use of Controlled Substances & Dangerous Drugs \(Requirement Reminders - November 2024\)](#)

On behalf of the Office of Research Administration and Research Compliance and Regulatory Affairs, I sincerely appreciate all your efforts in maintaining high compliance standards when conducting research with controlled substances and dangerous drugs. Our teams realize that these requirements take time, resources and effort so we appreciate your timely attention in ensuring you have applied and/or received your George Board of Pharmacy (GBP) and Drug Enforcement Administration (DEA) licenses if using dangerous drugs (DD) or controlled substances (CS) in your research protocols.

[Read Full Letter](#)

Preventing Research Misconduct

Emory University is committed to the highest possible standards of integrity in research. The administration, faculty, students, and staff share in the responsibility for preserving the integrity of research.

Research Misconduct means Fabrication, Falsification, or Plagiarism in proposing, performing, or reviewing research; submitting proposals for research; or in reporting research results, that is knowing, intentional and reckless.

Use the iThenticate tool for plagiarism detection. We recommend the use of this software to any faculty member submitting publications, grant proposals to federal or private entities, or sharing data with external organizations, for themselves, collaborators, or those under their supervision. Please keep in mind that this software does not guarantee that plagiarism has occurred, but acts as a tool to ensure the highest level of integrity in your scholarly work. To obtain an account, fill out this [request form](#).

Report questions and concerns to your Emory Research Integrity Officer (RIO) - Deepika Bhatia at rio@emory.edu

Strategic Optimization and Training

Emory Contributors: NCURA Magazine (December 2024)

New Era in Research Development with the Launch of the EMERGE Resource Library for MSIs and ERIs*



[Read Article](#)

Eck, K., & Hemming, J. (2024). New Era in Research Development with the Launch of the EMERGE Resource Library for MSIs and ERIs. *NCURA Magazine*, (December 2024), 33-35.

A Survey on Artificial Intelligence (AI) in Research Administration*



[Read Article](#)

Buoncuore, L., Cheng, Y., Gantt, K., Jafari, E., Markin, K. & Wilson, L. (2024). A Survey on Artificial Intelligence (AI) in Research Administration. *NCURA Magazine*, (December 2024), 64-69.

Reading the Signs: Strategies for Anticipating the Next Big Thing in Research Administration*



[Read Article](#)

Ferguson, C., Anderson, C., & Callahan, T. (2024). Reading the Signs: Strategies for Anticipating the Next Big Thing in Research Administration. *NCURA Magazine*, (December 2024), 70-71.

*The above articles are shared with limited permission of the National Council of University Research Administrators (NCURA).

Faculty Feedback Form

Do you have feedback in reference with Research Administration? We would love to hear from you.

[Submit Faculty Feedback](#)



EMORY

View this newsletter and past editions on our [ORA Newsletter webpage](#)